

INFORM

ÍNDICE DE GESTIÓN DE RIESGO
DE HONDURAS

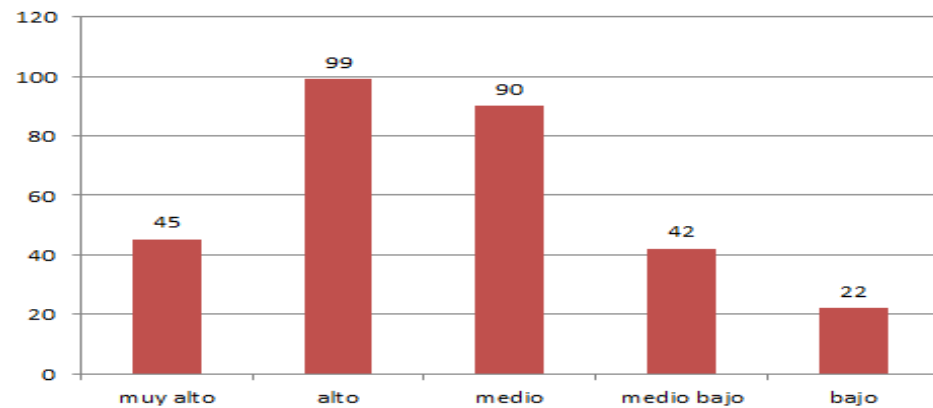
EVALUACIÓN DE RIESGOS, PARA LA PREPARACIÓN Y LA RESILIENCIA FRENTE A LAS CRISIS HUMANITARIAS



DEPARTAMENTO	MUNICIPIO	COD	Terremotos	Inundaciones	Ciclón y Marejadas	Deslizamientos	Sequía	Natural	Violencia	Humano	PELIGRO Y EXPOSICIÓN	Desarrollo y Pobreza	Desigualdad	Dependencia	Vulnerabilidad Socioeconómica	Población Desarraiga	Otros Grupos Vulnerables	Grupos Vulnerables	VULNERABILIDAD	Capacidad de Respuesta	Gobernanza	Institucional	Comunicación	Infraestructura Física	Acceso a Educación	Infraestructura	FALTA DE CAPACIDAD DE RESPUESTA	INFORM RISK	Rango	Índice de Confiabilidad (*)	Indicadores Faltantes (Número)
Santa Barbara	San Luis	1620	7.9	x	0.0	9.3	0.0	5.9	4.4	4.4	5.2	8.0	7.6	6.7	7.4	3.1	7.0	5.4	6.5	3.3	4.9	4.1	8.8	6.4	6.3	7.2	5.9	5.8	128	2.3	1
Santa Barbara	San Marcos	1621	7.4	2.9	0.0	6.1	0.0	3.9	7.1	7.1	5.7	7.0	7.4	6.7	7.0	3.0	7.0	5.3	6.2	6.7	4.2	5.6	6.1	5.3	5.0	5.5	5.6	5.8	128	2.0	0
Santa Barbara	San Nicolás	1622	7.4	x	0.0	8.3	0.0	5.1	1.4	1.4	3.5	7.2	8.0	6.6	7.3	2.4	6.3	4.6	6.1	6.7	4.4	5.7	6.8	4.7	4.9	5.5	5.6	4.9	235	2.3	1
Santa Barbara	San Pedro Zacapa	1623	6.6	0.0	0.0	6.0	0.0	3.2	5.6	5.6	4.5	6.5	8.2	6.8	7.2	1.6	5.2	3.6	5.7	10.0	5.3	8.6	6.1	4.8	2.9	4.6	7.1	5.7	145	2.0	0
Santa Barbara	Santa Rita	1624	6.2	0.0	0.0	8.0	0.0	3.8	6.2	6.2	5.1	7.9	8.2	7.3	7.8	2.2	5.8	4.2	6.3	10.0	7.6	9.1	8.0	5.4	5.9	6.4	8.0	6.4	51	#N/A	1
Santa Barbara	San Vicente Centenario	1625	6.1	x	0.0	0.0	0.0	2.0	2.5	2.5	2.3	6.9	6.7	5.9	6.5	2.4	6.6	4.8	5.7	10.0	4.9	8.5	4.6	3.3	6.6	4.8	7.1	4.5	255	2.3	1
Santa Barbara	Trinidad	1625	6.8	0.0	0.0	8.2	0.0	4.1	7.7	7.7	6.2	6.4	6.9	5.9	6.4	1.3	5.8	3.9	5.3	3.3	4.2	3.8	5.3	2.7	4.8	4.3	4.1	5.1	219	#N/A	0
Santa Barbara	Las Vegas	1627	7.3	0.0	0.0	6.3	0.0	3.5	8.7	8.7	6.8	5.8	7.3	6.8	6.6	3.5	4.0	3.8	5.4	3.3	1.8	2.6	5.1	4.0	4.5	4.5	3.6	5.1	219	2.0	0
Santa Barbara	Nueva Frontera	1628	6.4	x	0.0	7.9	0.0	4.5	7.1	7.1	6.0	8.4	8.7	7.8	8.3	3.8	6.0	5.0	7.0	3.3	5.4	4.4	7.4	6.2	6.8	6.8	5.7	6.2	79	2.3	1
Valle	Nacaome	1701	8.6	5.4	7.6	4.7	6.8	6.9	1.3	1.3	4.7	7.6	8.0	6.8	7.5	9.1	3.5	7.2	7.4	3.3	3.7	3.5	6.5	5.9	4.9	5.8	4.8	5.5	168	2.0	0
Valle	Alianza	1702	6.8	10.0	7.3	0.0	0.0	6.4	4.2	4.2	5.4	7.4	6.8	7.3	7.2	5.8	3.0	4.5	6.0	10.0	7.3	9.1	4.4	5.4	5.6	5.1	7.6	6.3	67	2.3	1
Valle	Amapala	1703	7.2	6.3	7.6	3.6	5.8	6.3	3.3	3.3	5.0	7.3	8.1	6.6	7.3	4.1	4.5	4.3	6.0	10.0	4.4	8.4	5.5	5.0	4.5	5.0	7.0	5.9	118	2.0	0
Valle	Aramecina	1704	6.7	3.3	0.0	7.5	9.4	6.4	2.6	2.6	4.8	8.0	8.5	7.2	7.9	4.1	4.2	4.2	6.4	10.0	7.1	9.0	6.6	7.9	6.4	7.0	8.2	6.3	67	2.3	1
Valle	Caridad	1705	6.2	0.0	0.0	6.7	9.5	5.8	0.0	0.0	3.4	7.5	8.4	6.6	7.5	6.8	4.0	5.6	6.7	10.0	7.4	9.1	7.6	8.1	5.1	6.9	8.2	5.7	145	2.3	1
Valle	Goascorán	1706	7.4	9.0	0.0	0.0	9.3	6.7	0.0	0.0	4.1	7.3	7.4	6.5	7.1	4.1	5.0	4.6	6.0	3.3	4.5	3.9	5.3	7.3	4.7	5.8	4.9	4.9	235	2.0	0
Valle	Langué	1707	7.7	9.3	0.0	3.5	9.7	7.4	0.0	0.0	4.7	8.1	8.8	7.0	8.0	5.3	5.3	5.3	6.9	6.7	6.4	6.6	8.8	9.0	4.7	7.5	7.1	6.1	92	2.0	0
Valle	San Francisco de Coray	1708	7.0	0.0	0.0	3.4	9.7	5.5	3.5	3.5	4.6	9.2	9.1	7.0	8.4	2.7	5.8	4.4	6.8	8.3	8.0	8.2	9.3	9.3	7.3	8.6	8.4	6.4	51	2.0	0
Valle	San Lorenzo	1709	8.3	9.3	3.6	0.0	0.0	5.7	1.3	1.3	3.8	6.5	7.0	6.1	6.5	7.3	6.6	6.1	6.3	8.3	2.5	6.2	4.2	6.7	4.0	5.0	5.6	5.1	219	2.0	0
Yoro	Yoro	1801	0.0	0.0	0.0	9.2	5.0	4.2	0.0	0.0	2.3	7.4	7.6	7.4	7.5	8.6	4.7	7.8	7.7	3.3	3.4	3.4	8.2	8.6	5.3	7.4	5.8	4.7	247	2.0	0
Yoro	Arenal	1802	0.0	0.0	0.0	4.1	0.0	1.0	6.4	6.4	4.2	6.8	7.7	7.5	7.3	1.6	5.9	4.1	5.9	10.0	5.8	8.7	5.9	6.1	3.5	5.2	7.3	5.7	145	2.0	0
Yoro	El Negrito	1803	7.4	0.0	0.0	9.0	0.0	4.7	5.2	5.2	5.0	6.9	7.6	7.0	7.2	8.0	4.6	6.6	6.9	3.3	3.5	3.4	6.4	6.5	5.1	6.0	4.8	5.5	168	2.0	0
Yoro	El Progreso	1804	7.7	10.0	0.0	6.4	0.0	6.4	10.0	10.0	8.8	5.2	5.4	6.0	5.5	9.0	3.8	7.2	6.4	3.3	0.8	2.1	3.3	3.9	2.9	3.4	2.8	5.4	177	2.0	0
Yoro	Jocón	1805	0.0	7.4	0.0	7.5	5.6	4.9	1.0	1.0	3.2	8.1	8.7	8.1	8.3	1.5	6.0	4.1	6.7	6.7	6.7	6.7	8.9	7.5	5.6	7.3	7.0	5.3	194	2.0	0
Yoro	Morazán	1806	6.6	0.0	0.0	7.5	0.0	3.7	7.8	7.8	6.2	7.6	8.0	7.3	7.6	10.0	6.4	8.8	8.3	0.7	3.6	2.3	6.1	6.8	4.6	5.8	4.3	6.0	100	2.0	0
Yoro	Olancho	1807	0.0	4.9	0.0	7.0	0.0	3.0	10.0	10.0	8.1	6.2	6.9	6.8	6.6	8.7	4.2	7.0	6.8	6.7	2.2	4.8	4.9	5.8	3.8	4.8	4.8	6.4	51	2.0	0
Yoro	Santa Rita	1808	7.7	4.7	0.0	5.0	0.0	4.1	5.1	5.1	4.6	6.1	6.6	6.5	6.4	10.0	4.4	8.4	7.5	8.3	2.8	6.3	4.6	5.4	3.0	4.3	5.4	5.7	145	2.0	0
Yoro	Sulaco	1809	0.0	0.0	0.0	5.2	4.4	2.3	4.7	4.7	3.6	7.8	8.3	8.1	8.1	6.8	6.0	6.4	7.3	3.3	6.2	4.9	7.8	6.9	4.9	6.5	5.8	5.3	194	2.0	0
Yoro	Victoria	1810	5.5	0.0	0.0	9.9	4.5	5.5	8.8	8.8	7.5	7.8	7.8	7.6	7.7	4.3	6.2	5.3	6.7	5.0	6.6	5.9	8.8	8.6	5.7	7.7	6.9	7.0	16	2.0	0
Yoro	Yorito	1811	0.0	0.0	0.0	9.9	6.4	5.1	5.1	5.1	5.1	8.7	8.3	7.6	8.2	2.3	6.3	4.6	6.8	3.3	7.2	5.6	8.8	7.4	5.8	7.3	6.5	6.1	92	2.0	0

El modelo INFORM mide tres dimensiones del riesgo: peligro y exposición, vulnerabilidad, y falta de capacidad de respuesta. El INFORM crea un perfil de riesgo para cada municipio con un puntaje de 0 – 10, un valor más bajo representa un menor riesgo y un valor más alto indica un mayor riesgo.

Clasificación de Municipios de acuerdo a INFORM



RIESGO	CLASE	MIN	MAX
	<i>muy alto</i>	6.6	10
	<i>alto</i>	5.8	6.5
	<i>medio</i>	5	5.7
	<i>medio bajo</i>	4	4.9
<i>bajo</i>	0	3.9	